

SSC CHSL 6th June 2022 Shift-2

English Language

1. Spot the error in the given sentence and select the correct sentence from the options given.

When it was time to chose between staying or leaving the country, she choose to stay back.

- A When it was time to choose between staying or leaving the country, she chose to stay back
- B When it was time to chose between staying or leaving the country, she chose to stay back.
- C When it was time to choice between staying or leaving the country, she choose to stay back
- D When it was time to have chose between staying or leaving the country, she chose to stay back.

Answer: A

2. Select the most appropriate option to fill in the blank.

The Young Global Leaders Community is an _____ for a dynamic community of exceptional people with the vision, courage, and influence to drive positive change in the world.

- A impediment
- B input
- C effort
- D accelerator

Answer: D

3. Select the INCORRECTLY spelt word.

- A Admonish
- B Avarise
- C Adverse
- D Beige

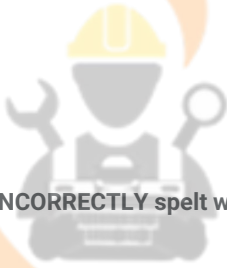
Answer: B

4. Select the option that can be used as a one-word substitute for the underlined group of words.

Looking for her father, Minu finally reached the area where animals are slaughtered for the market.

- A Archive
- B Arsenal
- C Abattoir
- D Apiary

Answer: C



INDIA

5. Select the most appropriate option to fill in the blank.
Constructive thinking should be developed through _____ reading.

- A avid
- B narrow
- C extensive
- D brief

Answer: C

6. Select the most appropriate meaning of the given idiom.
Up in arms

- A In rebellion
- B Begin fighting
- C Raise something
- D In unity

Answer: A

7. Select the option that expresses the given sentence in direct speech.
Gogol offered me to go to the market in his car.

- A "Let me take you to the market," Gogol offered.
- B "Can I take to the market," Gogol asked me.
- C "Let's go to the market in my car," Gogol told me.
- D "Can you come with me to the market," Gogol asked me.

Answer: C

8. Select the option that expresses the given sentence in active voice.
A lot has been learnt from my experiences.

- A I will learn a lot from my experiences.
- B I would learn a lot from my experiences.
- C I have learnt a lot from my experiences.
- D I will have learnt a lot from my experiences.

Answer: C

9. Select the option that can be used as a one-word substitute for the given group of words.
to renovate or improve

- A Relocate

- B** Revamp
- C** Resume
- D** Revalue

Answer: B

10. Select the most appropriate meaning of the given idiom.
Cut straight to the chase

- A** Allow to introduce an unimportant part
- B** Avoid unnecessary introduction and go to the more important part
- C** Avoid the most important part of text
- D** Disallow important introduction and go to the least important part

Answer: B

11. Select the most appropriate option that can substitute the underlined word in the given sentence.
Its time we left to the airport.

- A** It's
- B** It was
- C** It has
- D** It

Answer: A

12. In the following questions a statement has been given with highlighted text. Select the options that can replace the text with correct idiom or phrase.

The attitude of the culprit made the judge extremely angry

- A** Throw caution to the wind
- B** Make one's blood boil
- C** Play by the ear
- D** Back to the drawing board

Answer: B

13. Sentences of a paragraph are given below in jumbled order. Arrange the sentences in the correct order to form a meaningful and coherent paragraph.

- A.** To work as a journeyman he needed to have had the seven years of apprenticeship under his belt.
- B.** Under advice from his well-wishers at the University, Watt proceeded to London to learn his trade.
- C.** Watt made acquaintances with folks at the University of Glasgow.
- D.** In London, he found out that as an apprentice he had to spend seven years learning the trade.

- A** BCDA
- B** DABC

C CBDA

D ABCD

Answer: C

14. Select the INCORRECTLY spelt word

A Investigate

B Invite

C Invent

D involv

Answer: D

15. Select the most appropriate ANTONYM of the given word.
Terse

A Succinct

B Verbose

C Loathe

D Concise

Answer: B

16. The following sentence has been split into four segments. Identify the segment that contains a grammatical error.
Me and my friends / often go / to the cinema / together.

A together

B often go

C to the cinema

D Me and my friends

Answer: D

17. Select the denotation of the highlighted word.
He was bereft of hope after the tragedy struck.

A Filled

B Devoid

C Roused

D Strained

Answer: B

18. Select the most appropriate synonym of the given word.

Excruciating

- A Facile
- B Enticing
- C Alluring
- D Piercing

Answer: D

19. Select the INCORRECTLY spelt word.

- A Sinister
- B Adrointness
- C Dexterous
- D Gauche

Answer: B

20. Select the INCORRECTLY spelt word.

- A Hegemony
- B Nebulous
- C Elephantine
- D Comittee

Answer: D

Instructions [21 - 25]

In the following passage, some words have been deleted. Read the passage carefully and select the most appropriate option to fill in each blank.

Cloud computing is a type of Internet-based computing that provides (1)_____ computer processing resources and data to computers and other devices on demand. Cloud computing and storage solutions provide users and enterprises (2)_____ various capabilities to store and process their data in third-party data centres. Local computers no longer have to do all the heavy lifting when it comes to running applications. The goal of cloud computing is to apply traditional supercomputing or high-performance computing power, normally used by military and research (3)_____, to perform tens of trillions of computations per second, in consumer-oriented application such as financial (4)_____, to deliver personalised information and to provide data storage. In 2013, it was reported that cloud computing had become a highly demanded service or (5)_____ due to the advantages of high computing power, cheap cost of services, high performance, scalability, accessibility as well as availability.

21. Select the most appropriate option to fill in blank number 1.

- A unsolicited
- B prohibited
- C unspecified

D shared

Answer: D

22. Select the most appropriate option to fill in blank number 2.

A from

B into

C for

D with

Answer: D

23. Select the most appropriate option to fill in blank number 3.

A facilities

B support

C methodologies

D designs

Answer: A

24. Select the most appropriate option to fill in blank number 4.

A marketplace

B literacy

C portfolios

D burden

Answer: C

25. Select the most appropriate option to fill in blank number 5.

A authentication

B utility

C performance

D subscription

Answer: B

26. The second number in the given number-pairs is obtained by performing certain mathematical operation(s) on the first number. The same operation(s) is/are followed in all the number-pairs, except one. Find that odd number-pair.

- A 12:9
- B 8:4
- C 4:15
- D 20:25

Answer: C

27. In a certain code language, 'MEAL' is written as 'BMNF' and 'FOOD' is written as 'PEGP'. How will 'FARE' be written in that language?

- A GBSF
- B SFGB
- C FSBG
- D ERFA

Answer: B

28. Seven friends L, M, N, O, P, Q and R, each has a different height. R is taller than L. L is taller than M. N is the tallest among all. Only two people are taller than Q. O is not the shortest among all. Only one person is shorter than M. How many people are taller than R?

- A 6
- B 1
- C 3
- D 4

Answer: C

29. The second number in the given number pairs is obtained by performing certain mathematical operation(s) on the first number. The same operation(s) are followed in all the number pairs except one. Find that odd number pair.

- A 29:225
- B 17:81
- C 45:576
- D 31:256

Answer: C

30. Select the correct mirror image of the given combination when the mirror is placed at MN as shown.

pANd eMiC | M
N

- A iMəbИAq
- B ɔiMbпs q
- C ɔiMəbИA
- D ɔiMəbИAq

Answer: D

31. Three Statements are given followed by Three conclusions numbered I, II and III.

Assuming the statements to be true, even if they seem to be at variance with commonly known facts, decide which of the conclusions logically follow(s) from the statements.

Statements:

All reds are roses.

No violet is a red.

Some tulips are violets.

Conclusions:

I. Some roses are violets.

II. No tulip is a red.

III. No rose is a tulip.

- A Only conclusion II follows.
- B Both conclusions I and III follow.
- C None of the conclusions follow.
- D Both conclusions I and II follow.

Answer: C

32. If 12th February 2011 was a Saturday, then what was the day of the week on 13th February 2015?

- A Wednesday
- B Tuesday
- C Friday
- D Thursday

Answer: C

33. Select the correct combination of mathematical signs to replace the * signs and to balance the given equation.
 $25 * 7 * 56 * 8 * 88 * 14$

A +, -, =, ×, -

B -, +, ×, =, ÷

C -, ×, ×, =, +

D +, ×, ÷, =, -

Answer: D

34. If 'A' denotes '+', 'B' denotes '×', 'C' denotes '-' and 'D' denotes '÷', then what will come in place of '?' in the following equation?
 $11 B (25 D 5) A 7 B 3 C 24 A 1 B (16 D 4) = ?$

A 56

B 7

C 17

D 46

Answer: A

35. The second number in the given number-pairs is obtained by performing certain mathematical operation(s) on the first number. The same operation(s) is/are followed in all the number-pairs, except one. Find that odd number-pair.

A 4:18

B 16:6

C 25:8

D 49:12

Answer: A

36. Study the given pattern carefully and select the number that can replace the question mark (?) in it.

First row- 15, 62, 120

Second row- 18, 74, ?

Third row- 21, 86, 168

(NOTE: Operations should be performed on the whole numbers, without breaking down the numbers into its constituent digits.

E.g. 13 - Operations on 13 such as adding /deleting /multiplying etc. to 13 can be performed. Breaking down 13 into 1 and 3 and then performing mathematical operations on 1 and 3 is NOT allowed)

A 144

B 142

C 122

D 124

Answer: A

37. Select the option that is related to the fifth number in the same way as the second number is related to the first number and the fourth number is related to the third number.

121 : 9 :: 212 : 10 :: 508 : ?

- A 10
- B 13
- C 12
- D 11

Answer: C

38. If 01 February 2011 was Tuesday, then what was the day of the week on 01 January 2012?

- A Wednesday
- B Monday
- C Tuesday
- D Sunday

Answer: D

39. Select the correct mirror image of the given combination when the mirror is placed at MN as shown below.



- A t ɹ b ʌ d ɔ
- B t ɹ d ʌ b ɔ
- C t ɹ p ʌ d ɔ
- D t ɹ p ʌ q 6

Answer: A

40. Which of the following numbers will replace the question mark (?) in the given series?

150,154,1232,1244,19904,?

- A 19928
- B 19925
- C 19924

D 19926

Answer: C

41. Select the correct mirror image of the given combination when the mirror is placed at MN as shown.

b h j 5 8 2

M

N

A 7 8 5 ! q q

B 5 8 5 j h d

C 5 8 5 ! d d

D 5 8 2 j d d

Answer: D

42. If A denotes '+', B denotes '×', C denotes '-' and D denotes '÷', then what will come in place of '?' in the following equation?
(84 D 6) B 7 A (22 B 4) C 16 A (15 B 8) = ?

A 290

B 285

C 310

D 255

Answer: A

43. Which letter-cluster will replace the question mark (?) to complete the given series?
HIRC, ACYI, TWFO, MQMU, ?

A HKTA

B GKTA

C FKTA

D HKTZ

Answer: C

44. Select the option that represents the letters that, when sequentially placed from left to right in the blanks below, will complete the letter series.

_ M _ _ G _ D _ _ M _ C G _ D C

A G D C M C G D G

- B MDCMCGDM
- C GDCMCGDM
- D GDCDCGDM

Answer: C

45. In a certain code language, 'GIRL' is written as '*\$#!' and 'BOY' is written as '@Σ£'. How will 'LILY' be written in that language?

- A !*!£
- B #\$.£
- C !@!£
- D !\$!£

Answer: D

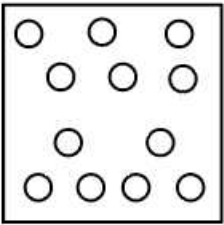
46. A paper is folded and cut as shown. How will it appear when unfolded?



- A
- B
- C



D



Answer: C

47. Select the option that is related to the fifth term in the same way as the second term is related to the first term and the fourth term is related to the third term.

STEADY : ETSYDA :: WORTHY : ROWYHT :: ANKLET : ?

A KANELT

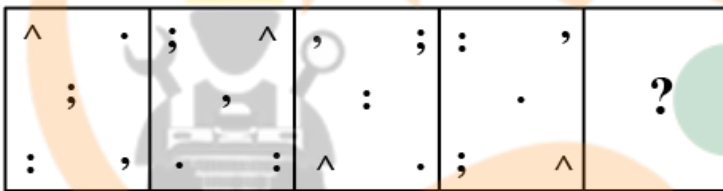
B KANLET

C KANTLE

D KANTEL

Answer: D

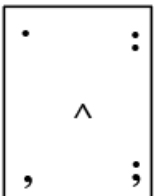
48. Select the figure that will replace the question mark(?) in the following figure series.



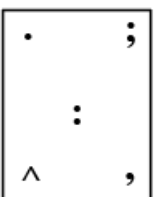
A

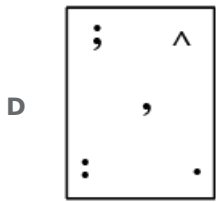


B



C





Answer: B

49. Select the correct mirror image of the given combination when the mirror is placed at MN as shown.



A j i h B N 2 6 7

B 7 6 2 N B h j

C 7 6 2 N B h

D 7 6 2 N B h j

Answer: D

50. Study the given pattern carefully and select the number that can replace the question mark (?) in it.

First row: 32, 40, 18

Second row: 38, 46, 21

Third row: 33, 43, ?

(NOTE: Operations should be performed on the whole numbers, without breaking down the number into its constituent digits.

For example, 13 - Operations on 13 such as adding/deleting/multiplying etc. to 13 can be performed. Breaking down 13 into 1 and 3 and then performing mathematical operations on 1 and 3 is not allowed.)

A 21

B 19

C 17

D 23

Answer: B

Quantitative Aptitude

51. $16a^2 + 4b^2 - 9c^2 - 16ab - 12bc - 24ca = ?$

A $(4a - 2b + 3c)^2$

B $(4a - 2b - 3c)^2$

C $(4a + 2b - 3c)^2$

D $(4a + 2b + 3c)^2$

Answer: B

52. The table below shows the expenditure of a company (in lakhs of rupees per annum) in five consecutive years as mentioned. Study the table and answer the question that follows.

Expenditure (in lakh rupees) per annum over the given years					
Year	Item of Expenditure				
	Salaries	Fuel and Transport	Marketing	Bonus	Taxes
2016	332	80	35	2	102
2017	368	125	40	3.68	128
2018	444	140	44	4.12	88
2019	480	156	50	4.82	96
2020	516	180	54	5.26	116

As per the information provided in the table, the positive difference between the yearly average expenditure on salaries and taxes of the company is _____.

A ₹286 lakhs

B ₹342 lakhs

C ₹298 lakhs

D ₹322 lakhs

Answer: D

53. Simplify the following expression.

$$\frac{(2.01 \times 2.01 \times 2.01) + (39.75 \times 39.75 \times 39.75) + (28.24 \times 28.24 \times 28.24) - 3(2.01 \times 39.75 \times 28.24)}{(2.01 \times 2.01) + (39.75 \times 39.75) + (28.24 \times 28.24) - (2.01 \times 39.75) - (39.75 \times 28.24) - (28.24 \times 2.01)}$$

A 140

B 50

C 70

D 100

Answer: C

54. If the corresponding angles of two triangles are equal and satisfy $\frac{PX}{ER} = \frac{ZX}{RF} = \frac{PZ}{EF}$, then:

A $\triangle PXZ$ is similar to $\triangle EFR$

B $\triangle PXZ$ is similar to $\triangle ERF$

C $\triangle XPZ$ is similar to $\triangle ERF$

D $\triangle PXZ$ is similar to $\triangle REF$

Answer: B

55. If the length of diagonal of a cube is $8\sqrt{3}$ cm then what is its surface area?

- A 164 cm^2
- B 64 cm^2
- C 384 cm^2
- D 204 cm^2

Answer: C

56. The value of $\sin 8^\circ$ is given as $\frac{\sqrt{5}-1}{4}$. Find the value of $\operatorname{cosec} 18^\circ$.

- A $\frac{\sqrt{5}+1}{4}$
- B $\frac{\sqrt{5}+1}{2}$
- C $\sqrt{5}-1$
- D $\sqrt{5}+1$

Answer: D

57. The value of $(7 + 8 - 9 \div 3 \times 2) + [52 - 4 \text{ of } 5 + 4 \times 7]$ is:

- A 61
- B 277
- C 69
- D 64

Answer: C

58. A work is done by P & Q, Q & R, and R & P in 12, 15, and 20 days, respectively. How many days will P alone take to complete the work?

- A 35 days
- B 25 days
- C 40 days
- D 30 days

Answer: D

59. A man can swim in still water at a speed of 6 km/h, but he takes thrice as long to swim upstream as downstream. The speed of the man, when swimming downstream is:

- A 3 km/h
- B 2 km/h
- C 9 km/h
- D 6 km/h

Answer: C

60. If 30 men can harvest a meadow in 7 days, in how many days can 21 men harvest the same meadow?

- A 10
- B 14
- C 12
- D 15

Answer: A

61. A shopkeeper gives 15% and 35% discounts on a bottle. If the selling price of the bottle is ₹1,547, then the marked price of the bottle is:

- A ₹2,400
- B ₹2,500
- C ₹ 2,700
- D ₹2,800

Answer: D

62. A batsman in his 11th inning scores 88 runs, thereby increasing his average score by 4. What is his average after the 11th innings?

- A 49
- B 47
- C 48
- D 46

Answer: C

63. In an election between two candidates, one got 40% of the total valid votes, and 30% of the votes were invalid. If the total number of votes was 7500, the number of valid votes that the other candidate got was:

- A 1540
- B 3250
- C 2350

D 3150

Answer: D

64. The table below shows the number of cakes sold by six different bakeries in a town on five different days of a particular week.

Days \ Bakery	Days				
	Monday	Tuesday	Thursday	Saturday	Sunday
A	222	255	215	250	266
B	205	275	314	295	260
C	245	266	305	195	235
D	221	230	185	300	280
E	312	325	298	275	254
F	175	205	255	240	308

The total number of cakes sold by Bakery C on Saturday and Sunday, taken together, is approximately what percentage of the number of cakes sold by Bakery E on Tuesday?

- A 125
- B 130
- C 128
- D 132

Answer: D

65. If the diagonal of a rhombus is 8 cm and its area is 48 cm^2 , then the length of each side of the rhombus is:

- A $\sqrt{13}$ cm
- B $2\sqrt{13}$ cm
- C $6\sqrt{13}$ cm
- D $5\sqrt{13}$ cm

Answer: B

66. A dishonest dealer is selling sugar at ₹40 per kg and pretending that he is selling it at a loss of ₹5 per kg but he actually gives 800 g instead of 1 kg, using a faulty weight.

What is his actual profit or loss percent?

- A Gain, 11%
- B Gain, $11\frac{1}{9}$
- C Loss, $10\frac{1}{9}$
- D Loss, $9\frac{1}{9}$

Answer: B

67. The number 5132832 is divisible by ____.

- A 8
- B 6
- C 7
- D 9

Answer: B

68. The diagonal of a rectangle is 17 cm long and its perimeter is 46 cm. The area of the rectangle is:

- A 120 cm^2
- B 125 cm^2
- C 115 cm^2
- D 130 cm^2

Answer: A

69. If $a + b = 8$ and $a - b = 6$, then find the value of 'ab'.

- A 6
- B 8
- C 5
- D 7

Answer: D

70. What is the average of the following data?

1.2, 1.7, 3, 4.8, 10.5, 17.3 and 24.5

- A 9
- B 7
- C 6
- D 11

Answer: A

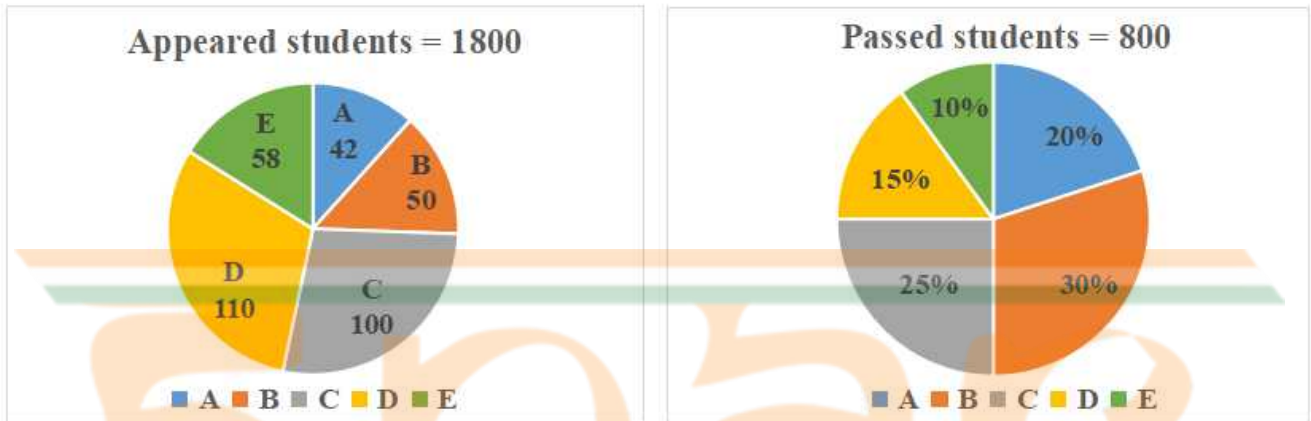
71. The selling price of a watch after successive discounts of 20% and 20% is ₹640. What is the marked price of the watch?

- A ₹1,000
- B ₹800

- C ₹900
D ₹1,200

Answer: A

72. The pie-chart given below given information about the number of students from five sections.A,B,C,D. and E. of Class 12 of a school to have appeared and to have passed in the final examination The pie-chart on the left given the central angles of the sectors represent the students appearing in the exam from the five different section.while the pie-chart on the right gives the section-wise numbers of students to pass the exam as percentages of the total number of students who passed the exam from all the five sections taken together.



Find the ratio of the average of the number of students who appeared in the exam from section A, B, and C to the average of the numbers of students who passed from Sections B, C and D.

- A 106 : 28
B 13 : 6
C 28 : 53
D 12 : 7

Answer: D

73. What will be the present value of ₹ 484 due in 2 years at 10% per annum compound interest?

- A ₹600
B ₹400
C ₹200
D ₹800

Answer: B

74. A train takes 3 hours to travel from place A to B at the speed of 60 km/h. The same train takes 2 hours to travel from B to C at 50% increased speed. What is the average speed of the train from place A to C?

- A 60 km/h
B 90 km/h

C 80 km/h

D 72 km/h

Answer: D

75. In an election four candidates were there in the fray, out of which three were nominated from the three national parties and they got votes in a ratio of 2:3:4. The total votes polled were 1,89,000 and the fourth candidate got 18,000 votes. The votes obtained by the three candidates of the national parties are respectively: (assuming all votes valid)

A 38,000, 57,000 and 76,000

B 34,000, 51,000 and 68,000

C 36,000, 54,000 and 72,000

D 40,000, 60,000 and 80,000

Answer: A

General Awareness

76. Which of the following is a large group of rock-forming silicate minerals that constitutes more than 50% of the Earth's crust and is widely used in the glass and ceramic industries?

A Amphibole

B Feldspar

C Zeolites

D Pyroxene

Answer: B

77. Pandit Shambhu Maharaj, a classical _____ dancer, was awarded with Sangeet Natak Akademi Award in 1967.

A Kuchipudi

B Kathak

C Odissi

D Kathakali

Answer: B

78. Which two gases are having the highest percentage of the earth's atmosphere?

A Nitrogen and hydrogen

B Nitrogen and oxygen

C Oxygen and carbon monoxide

D Carbon dioxide and nitrogen

Answer: B

79. Which of the following teams won the Indian Premier League (IPL) 2021?

A Chennai Super Kings

B Kolkata Knight Riders

C Royal Challengers Bangalore

D Mumbai Indians

Answer: A

80. Who among the following is a sitar player?

A Shivkumar Sharma

B Shahid Parvez

C Sultan Khan

D Sheik Chinna Moulana

Answer: B

81. 'A Champion's Mind: Lessons from a Life in Tennis' is the autobiography of which of the following tennis players?

A Maria Sharapova

B Pete Sampras

C Leander Paes

D Boris Becker

Answer: B

82. Which Article of the Indian Constitution deals with the impeachment of the President?

A Article 53

B Article 58

C Article 61

D Article 59

Answer: C

83. In which of the following sports is 'dunk shot' used?

A Tennis

- B** Basketball
- C** Hockey
- D** Baseball

Answer: B

84. Kishori Amonkar, Indian classical vocalist of Jaipur gharana. received Padma Vibhushan, India's second highest civilian award, in which of the following years?

- A** 2002
- B** 1998
- C** 1985
- D** 2005

Answer: A

85. The number of silver medals won by India in Tokyo Olympics 2020 is _____.

- A** 3
- B** 1
- C** 2
- D** 4

Answer: C

86. 'The Man Who Made The Elephant Dance' is an autobiography of the famous entrepreneur _____.

- A** Rattan Tata
- B** Mukesh Ambani
- C** Ghanshyam Das Birla
- D** Dr. Verghese Kurien

Answer: D

87. Which membrane-bound organelles, first discovered in 1857, are often referred to as the 'energy factories' of the cell because they are responsible for making adenosine triphosphate (ATP), the cell's main energy-carrying molecule?

- A** Smooth endoplasmic reticulum
- B** Vacuoles
- C** Mitochondria
- D** Ribosomes

Answer: C



INDIA

88. Padma Bhushan awardee Padma Subrahmanyam is a _____ dancer.

- A Kathak
- B Mohiniyattam
- C Manipuri
- D Bharatanatyam

Answer: D

89. In the Satbir Singh vs _____ case, in 2021, the Supreme Court laid down guidelines for dowry death trials.

- A State of Rajasthan
- B State of Haryana
- C State of Punjab
- D State of Uttar Pradesh

Answer: B

90. Correctly match the following peaks of the Himalayas to their heights.

Peak	Height in metres
1. Mt. Everest	a. 8172
2. Dhaulagiri	b. 8848
3. Kamet	c. 8078
4. Annapurna	d. 7756

- A 1-a, 2-b, 3-c, 4-d
- B 1-c, 2-b, 3-c, 4-d
- C 1-b, 2-a, 3-d, 4-c
- D 1-d, 2-c, 3-b, 4-a

Answer: C

91. 'GOAL' is an autobiography of which famous Indian player?

- A Sunil Chetri
- B Major Dhyan Chand
- C Balbir Singh
- D Roop Singh

Answer: B

92. Which enzyme is present in saliva?

- A Amylase
- B Rennin
- C Trypsin
- D Pepsin

Answer: A

93. Indian music maestro Bhimsen Joshi was related to the_____ Gharana.

- A Kirana
- B Agra
- C Indore
- D Patiala

Answer: A

94. Choose the correct sequence for central dogma.

- A Protein translation, DNA Replication, m-RNA transcription
- B DNA Replication, m-RNA transcription, Protein translation
- C m-RNA transcription, Protein translation, DNA Replication
- D m-RNA transcription, DNA Replication, Protein translation

Answer: B

95. The First Five Year Plan was released in the year _____.

- A 1952
- B 1961
- C 1951
- D 1960

Answer: C

96. Who among the following won the FIH Women's Hockey Player of the Year at the International Hockey Federation's (FIH) Hockey Stars Awards 2020-21?

- A Neha Goyal
- B Monika Malik

C Sjoerd Marijne

D Gurjit Kaur

Answer: D

97. Match column A with column B.

Column-A	Column-B
i. Powerhouse of a cell	a. Plastid
ii. Kitchen of a cell	b. Mitochondria
iii. Suicidal bags of a cell	C. ucleus
iv. Brain of a cell	d. Lysosomes

A i-a, ii-b, iii-c, iv-d

B i-b, ii-a, iii-c, iv-d

C i-d, ii-b, iii-c, iv-a

D i-b, ii-a, iii-d, iv-c

Answer: D

98. Who among the following got the Sangeet Natak Akademi 2017 for her contribution to Odissi dance?

A Sujata Mohapatra

B Shobha Koser

C Rama Vaidyanathan

D L N Oinam Ongbi Dhoni Devi

Answer: A

99. Padma Shri awardee Guru Keezhpadam Kumaran Nair was a dancer of which of the following classical dances of India?

A Mohiniyattam

B Odissi

C Kathak

D Kathakali

Answer: A

100. Which of the following is the birthplace of Tansen?

A Agra

B Chanderi

C Delhi

D Gwalior

Answer: D

