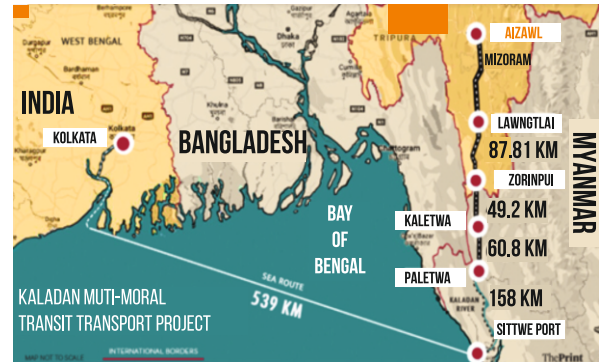


NEWS TODAY

MYANMAR OBJECTS TO BORDER ROADS ORGANISATION PRESENCE IN TRILATERAL ROAD PROJECT

- Union government has informed **parliamentary committee on home affairs about Myanmar government's reservations on BRO** for the completion of the India-Myanmar-Thailand (IMT) trilateral highway and Kaladan Multimodal Transit Transport (KMTT) project.
 - The ministry is exploring the involvement of other agencies like NPCC, NHAI, IRCON and RITES for the implementation of the project.
- **IMT trilateral highway**
 - The 1360 km long **highway is a highway under construction under India's Look East Policy that will connect Moreh, India with Mae Sot, Thailand via Myanmar.**
 - It will **boost trade and commerce in ASEAN-India Free Trade Area**, and with rest of Southeast Asia.
 - India has also proposed **extending highway to Cambodia, Laos and Vietnam.**
- **KMTT project**
 - Multi-modal transport project having three different stretches involving shipping, Inland Water and road transport stretches.
 - It connects **Kolkata port to Sittwe port in Myanmar through sea route, Sittwe to Paletwa by Inland water transport on Kaladan river, Paletwa to India by road** crossing the Indo-Myanmar border in the way.
 - It will reduce distance from Kolkata to Mizoram by approximately 1000 km and cut travelling time to 3-4 days for transport of goods.



PARLIAMENTARY COMMITTEE ON AGRICULTURE PRESENTED A REPORT ON PRADHAN MANTRI FASAL BIMA YOJANA (PMFBY)

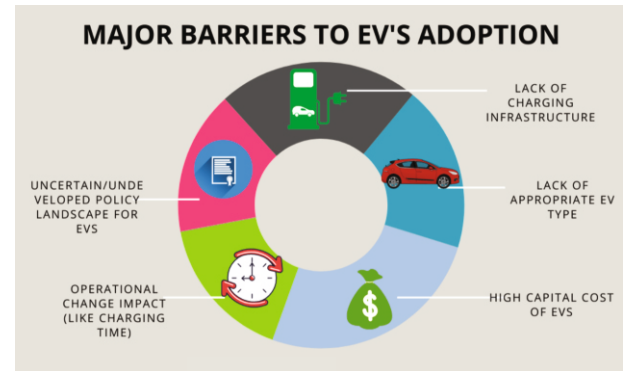
- **Key issues highlighted**
 - **Withdrawal of States** from PMFBY
 - **Delay in Settlement of Claims**
 - **Institutional capacity** for implementing PMFBY
 - **Lack of coordination** between different stakeholders
 - **various types of yield** disputes between State Governments and insurance companies
 - **Inadequate awareness** among farmers about the scheme
- **Key recommendations:**
 - Suitably **modify two provisions under revamped operational guidelines to prevent withdrawal of states**
 - States delaying release of subsidy beyond stipulated timelines can't participate in upcoming seasons.
 - **Requisite Central Share** of premium subsidy (90:10 for North Eastern States and 50:50 for remaining States) will be provided for areas/crops having **gross premium rate upto 25% for Irrigated and upto 30% for Un-irrigated Areas/Crops.**
 - Expedite **study on exploring Alternate Risk Measures for High Risk Areas/Crops**
 - Ensure **opening of functional office at Tehsil Level in each District** by Insurance Companies(ICs)
 - Timely **performance** evaluation of IC
 - Ensuring **no compulsory deduction** from account of Loanee farmers.
 - **Fix timelines for ICs to settle their claims on time or face penalisation**
 - **Formulations of Grievances Redressal Committees** at different levels by **all States/UTs.**

○ About PMFBY

- PMFBY was launched in April, 2016 to provide a simple and affordable Crops Insurance Product to ensure comprehensive risk cover for crops to farmers **against all non-preventable natural risks from Pre-sowing to Post-harvest and to provide adequate claim amount.**
- Prescribed premium is 2% **to be paid by farmers for all Kharif crops and 1.5% for all rabi crops. In the case of annual commercial and horticultural crops, the premium is 5%.**
- In order to ensure more efficient and effective implementation of the scheme, the central government had revamped PMFBY in the 2020 Kharif season with provisions such as **Enrolment 100% voluntary for all farmers; flexibility to states/UTs in implementation.**

NITI AAYOG RELEASES HANDBOOK TO GUIDE ELECTRIC VEHICLE (EV) CHARGING INFRASTRUCTURE IN INDIA

- The objective is to enhance charging infrastructure and **facilitate a rapid transition to electric mobility** in the country.
 - > **Handbook for Electric Vehicle Charging Infrastructure Implementation** helps in it through systematic approach on planning, authorization, and execution of EV charging infrastructure.
- It is projected that from existing **2,000 charging stations** (March 2021), India will need at least **4 lakh charging stations by 2026** to meet accessibility requirement of
 - > Charging Station at every **3 kms in city, and**
 - > **25 km** on both sides of highways.
- Electric Vehicles Initiative (EVI) EV30@30 goal**, i.e. to have at least 30% new electric vehicle sales by 2030, requires an accessible and robust charging infrastructure for EVs.
- Initiatives to enhance EV Charging infrastructure**
 - > **Tax reduction on charger and charging stations** from 18% to 5%
 - > **Incentives for EV charging infrastructure** deployment under FAME II (Rs. 1000 crore).
 - > **Charging Infrastructure for Electric Vehicles - Guidelines and Standards were issued** by the Ministry of Power mentioning the roles and responsibilities of various stakeholders at Central & State level, for expediting the development of public EV charging infrastructure across the country.



INDIA ACHIEVES 100 GW MILESTONE OF INSTALLED RENEWABLE ENERGY (RE) CAPACITY

- The total installed renewable energy capacity in India, excluding large hydro, has crossed the mile-stone of 100 GW.
 - > While 100 GW has been installed, **50 GW is under installation and 27 GW is under tendering.**
 - > If large hydro is included the installed RE capacity **increases to 146 GW.**
- India stands at **4th position** in the world in terms of installed **RE capacity**, **5th in solar** and **4th in wind** in terms of installed capacity.

Sources of RE	Target by 2022	Achieved	Initiatives
Solar Energy	100 GW	45.2 GW	<ul style="list-style-type: none"> ● Development of Solar Parks and Ultra Mega Solar Power Projects. ● Grid Connected Solar Rooftop Programme ● PM KUSUM (Pradhan Mantri Kisan Urja Suraksha evam Utthaan Mahabhiyan).
Wind Energy	60 GW	39.6 GW	<ul style="list-style-type: none"> ● Accelerated Depreciation benefit; concessional custom duty exemption on certain components of wind electric generators. ● Generation Based Incentive (GBI) Scheme was available for the wind projects commissioned before 31 March 2017. ● Issued Guidelines for Tariff Based Competitive Bidding Process for Procurement of Power from Grid Connected Wind Power Projects.
Small Hydro Power (Energy produced from water) + Biomass Energy	15 GW	15.4 GW	<ul style="list-style-type: none"> ● UNDP-GEF assisted Technical Assistance project entitled "Optimizing Development of Small Hydro Resources in Hilly Regions of India" ● India-Renewable Resources Development Project with IDA credit line having interalia small hydro development component. ● A new Hydropower policy for 2018-28 has been drafted for the growth of hydro projects in the country. ● Biomass power & cogeneration programme

PRIME MINISTER RELEASED FINANCIAL SUPPORT TO WOMEN SELF-HELP GROUPS (SHGS)

- Prime Minister released **capitalization support funds of Rs. 1625 Crore to over 4 lakh SHG** to increase the scope of entrepreneurship among women and for greater participation in the resolve of Aatma Nirbhar Bharat.
 - > In addition, **Rs. 25 crore as seed capital for 7500 SHG members** and **Rs. 4.13 crore for 75 FPOs (Farmer Producer Organizations)** under **PM Formalisation of Micro Food Processing Enterprises (PMFME)** released.
 - SHGs are **small informal group of 10-20 individuals**, who are **homogenous with respect to social and economic background** and come together voluntarily for **promoting saving habit among members** and for a common cause to raise and manage resources for the benefits of group members.
 - Measures taken:**
 - > **Deendayal Antyodaya Yojana-National Rural Livelihoods Mission (DAY-NRLM):** It aims at mobilising rural poor households into SHGs in a phased manner and provide them long-term support.
 - > **SHG-Bank Linkage Programme-** The linking of SHGs with banks aims at using the intermediation of the SHGs between the banks and the rural poor for cutting down the transaction costs for both banks and their rural clients. It is initiated by NABARD.
- **Significance of SHGs:** women empowerment, poverty alleviation, inculcating financial discipline, rural and human resource development.

 <p>Extended troika meet</p>	<ul style="list-style-type: none"> • Qatar hosted a meeting of the “extended troika” that was convened by Russia and was joined by the US special envoy for Afghanistan, Zalmay Khalilzad, and his counterparts from Russia, China and Pakistan. <ul style="list-style-type: none"> ➢ Original “Troika” process involved consultations between U.S., Russia and China. • India participated in the regional conference in Doha for the first time, along with Russia, US, China and Pakistan. <ul style="list-style-type: none"> ➢ However, post conference no official statement has been given. • Aim of the extended troika meet is to fasten Afghan peace process.
 <p>RBI to penalise banks for non-availability of cash in ATMs</p>	<ul style="list-style-type: none"> • In a direction issued to banks, RBI said that from October 1, banks will face a penalty of Rs 10,000 per ATM if found without cash for more than ten hours in a month. • In case of White Label ATMs (WLAs), the penalty would be charged to the bank which is meeting the cash requirement of that particular WLA. The bank, may, at its discretion, recover the penalty from the WLA operator. <ul style="list-style-type: none"> ➢ ATMs set up, owned, and operated by non-banks are called white-label ATMs (WLAs).
 <p>Special purpose vehicle (SPV) model</p>	<ul style="list-style-type: none"> • Special purpose vehicle (SPV) model of National Highways Authority of India (NHAI) will replace build-operate-transfer (BOT) mode for some projects. • SPV is a legal entity that is formed for a well-defined, sole and narrow purpose. <ul style="list-style-type: none"> ➢ They are generally formed to isolate a company’s assets or activities. ➢ The activities or assets are distanced into the new entity, i.e., the SPV and so investors or lenders feel more comfortable. • Significance: It is a means to separate the risk and free up capital.
 <p>Storm surges</p>	<ul style="list-style-type: none"> • The Odisha government is preparing an action plan for the coastal stretches of the State, which are highly vulnerable to storm surges. <ul style="list-style-type: none"> ➢ The State plans to raise saline and flood embankments along the coast to prevent tidal surges from inundating human habitations. • Storm surge is the abnormal rise in seawater level during a storm, measured as the height of the water above the normal predicted astronomical tide. <ul style="list-style-type: none"> ➢ The surge is caused primarily by a storm’s winds pushing water onshore.
 <p>Fit India Freedom Run 2.0</p>	<ul style="list-style-type: none"> • FIT India Mission has conceptualized FIT INDIA FREEDOM RUN 2.0 to commemorate the 75th Independence Day - "Azadi Ka Amrit Mahotsav". <ul style="list-style-type: none"> ➢ It involves “Physical/Virtual Run” in continuum from 13th August to 2nd October 2021. ➢ Aim is to encourage fitness and help us all to get freedom from obesity, laziness, stress, anxiety, diseases etc. • FIT INDIA Movement was launched on 29th August, 2019 by Prime Minister with a view to make fitness an integral part of our daily lives.



Morocco

- Recently, Israel opened its diplomatic mission in Morocco as part of normalising relations under “**Abraham Accords**”.
- Morocco (**Capital: Rabat**) is a mountainous nation lying West to North Africa, separated from Europe by the **Strait of Gibraltar**.
- It is a major economy in North Africa and part of the **Maghreb league**.
- Ibn Battuta, a Moroccan scholar traveled from Morocco to India in 14th century.



Algeria

- With the death toll due to wildfires climbing to 69, Algeria declared 3-days of national mourning.
- Algeria (**Capital: Algiers**) is the **biggest African nation (10th globally)** with an area of nearly 2.4 million sq km.
- Lying in Northern Africa, it is part of the **Maghreb league** and **OPEC**, gaining independence from France in 1962.
- India supported its **freedom movement** (with Algerian National Liberation Front having office in India from 1950's) with **oil, gas** and **phosphates** as main present exports from Algeria to India.



Tawang

- Recently, the Arunachal Pradesh state government approved the **North East Frontier (NF) Railway** proposal for a ‘**Toy Train Project**’ in Tawang.
- Situated nearly 448km northwest from **Itanagar**, Tawang is a major tourist hotspot with an elevation of 3,048 metres.
- Surrounded by **Bhutan** and **Tibet**, Tawang is connected with West Kameng through Sela Pass.
- It is home to **Tawang Monastery**, the **largest monastery** of India and **2nd largest** in the **world** after **Potala Palace in Lhasa** (Tibet).

